



OAKFIELD



Southover High Street, Lewes
Asking Price £750,000



SUMMARY

Step into the charm of historic Lewes with this truly unique and beautifully presented two-bedroom detached character home, tucked away in one of the town's most iconic and picturesque locations.

East Lodge is a stunning converted former lodge house, nestled just off Southover High Street behind an elegant brick archway. Set within an enchanting walled garden filled with colour and mature planting, this home offers stylish, contemporary living while retaining its period charm. It is in great order throughout with the added benefit of a newly fitted boiler.

Inside, the home opens into a bright and beautifully appointed open-plan living space with whitewashed vaulted ceilings and exposed beams, giving a light, airy, and welcoming feel. The kitchen area features sleek white cabinetry, integrated appliances, and plenty of worktop space – perfect for both entertaining and everyday use - full of light.

The sitting and dining area is bathed in natural light from the dual-aspect windows and feels wonderfully tranquil, with views out to the private garden. The ground floor also includes a double bedroom, modern shower room, and useful storage.

Upstairs, you'll find a generously sized principal mezzanine



bedroom with cloakroom and eaves storage, set beneath the vaulted ceiling. The space feels open and peaceful, ideal for restful nights or a calm work-from-home zone.

To the rear, a detached brick-built garage (approx. 159 sq ft) offers secure storage or potential for a home office, gym, or further accommodation (subject to consents). The garden is a joy – private, well-landscaped, and full of personality, with multiple seating areas ideal for relaxing or entertaining outdoors and full of interesting and thoughtful planting

Southover High Street is among the most desirable addresses in Lewes, known for its historic character and proximity to the town's many amenities. East Lodge is moments from the Southover Grange Gardens,



Sitting / Dining / Kitchen

23'5 x 21'

Bedroom

14'7 x 8'2

Mezzanine Bedroom

16'10 x 14

Garage

17'3 x 9'1

Council Tax Band - E £3,211 per annum















INFORMATION

Tenure

Freehold

Local Authority

Lewes District Council

Council Tax Band

E

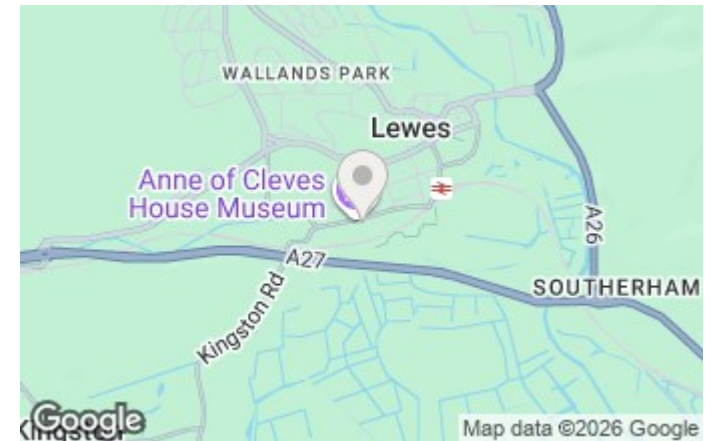
Opening Hours

Monday to Friday	9.00am - 5.30pm
Saturday	9.00am - 4.00pm

Viewings

Please contact us on 01273 474101 if you wish to arrange a viewing appointment for this property or require further information.

Area Map



Floorplan

East Lodge, Southover High Street, Lewes, BN7 1HT

Approximate Gross Internal Area
(Excluding Void) = 83.9 sq m / 903 sq ft
Garage = 14.8 sq m / 159 sq ft
Total = 98.7 sq m / 1062 sq ft

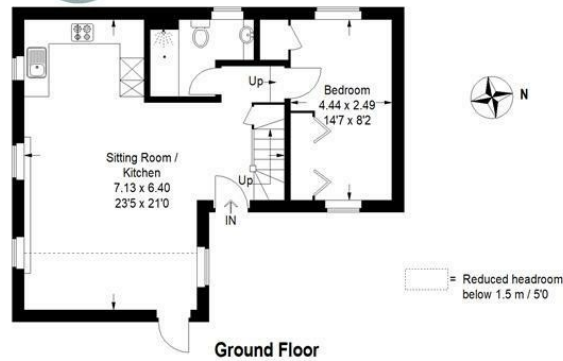
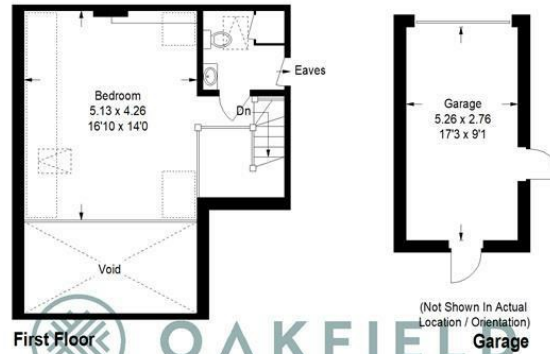
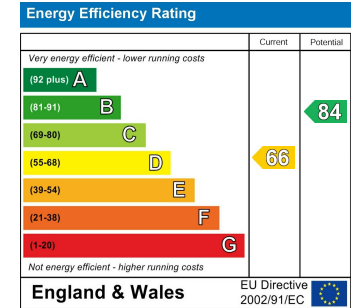


Illustration for identification purposes only, measurements are approximate, not to scale.
Imageplansurveys @ 2025

Energy Efficiency Graph



These particulars, whilst believed to be accurate are set out as a general outline only for guidance and do not constitute any part of an offer or contract. Intending purchasers should not rely on them as statements of representation of fact, but must satisfy themselves by inspection or otherwise as to their accuracy. No person in this firm's employment has the authority to make or give any representation or warranty in respect of the property.